



**TRANSIT'S ROLE IN  
COMBATING  
HUMAN  
TRAFFICKING**

*It started with training for truckers, but it has expanded to be so much more...*



# HUMAN TRAFFICKING IN THE NEWS

## Lakefront Bus Lines driver calls Westlake police after passenger says she was forced into prostitution

When Campbell finally escaped the pimp who was harming her — by running away and getting on a bus — she had little money and no clean clothes.

Prosecutors said Jackson met the 33-year-old woman online in the summer of 2017 and led her to believe they were in a serious romantic relationship.

Shortly after taking a bus to Atlanta, she was forced to perform oral sex on strangers in a warehouse on Peachtree Industrial Boulevard, authorities said.

## Man gets 3 years in RTA stop kidnapping investigators say was tied to human trafficking operation

That's why when a Metrolinx revenue protection officer recently met a young man exhibiting some common red flags associated with human trafficking, he took

# WHAT IS HUMAN TRAFFICKING?

The exploitation of human beings through force, fraud or coercion, for the purposes of commercial sex or forced labor, wherein a third party is making a profit.

**Human Trafficking is:  
MODERN DAY SLAVERY**



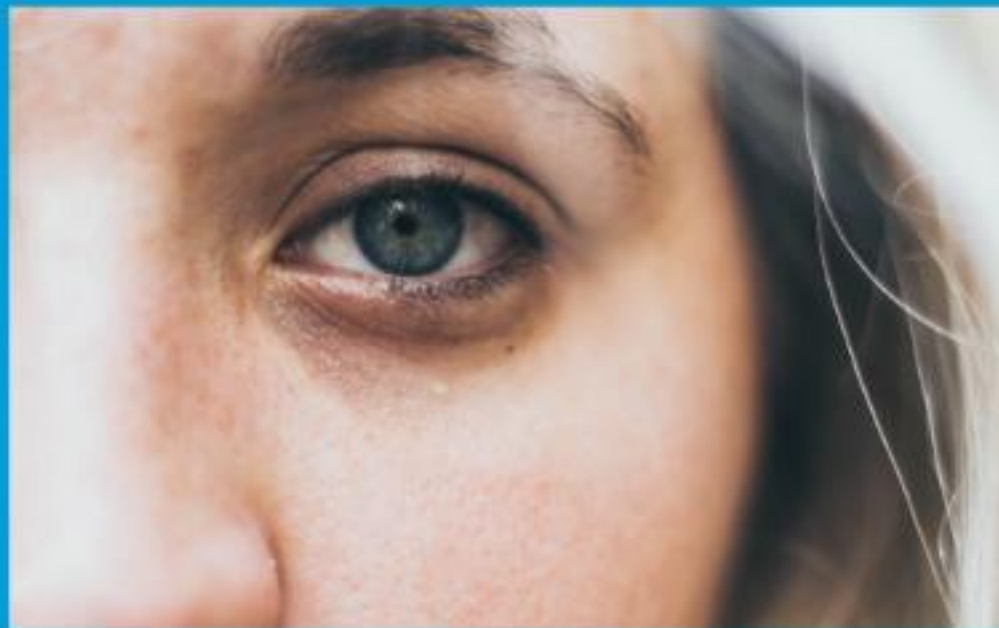


# **THERE IS NO SUCH THING AS A "CHILD PROSTITUTE"**

By federal law, anyone under the age of 18 who is induced to perform a commercial sex act is automatically a trafficking victim.

# THE TRUTH ABOUT HUMAN TRAFFICKING

*Most victims know  
their trafficker.*



*Traffickers can be  
anyone.*



*It's happening in your  
backyard.*



# TRANSIT & TRAFFICKING

Intersections:



Recruitment



Exploitation



Exit



Recovery

# TRANSIT & TRAFFICKING

In a 2018 Polaris survivor survey:

**42%**

shared that their traffickers used local and/or long distance buses in their exploitation.

**54%**

named access to transportation as a barrier to leaving their trafficking situation.

**26%**

shared that public/mass transportation played a role in at least one exit attempt.



# VULNERABILITIES

**60%**

of US children  
from low-  
income families  
ride the school  
bus.

Lower  
income,  
minority &  
immigrant  
individuals are  
**MORE LIKELY**  
to use public  
transit.

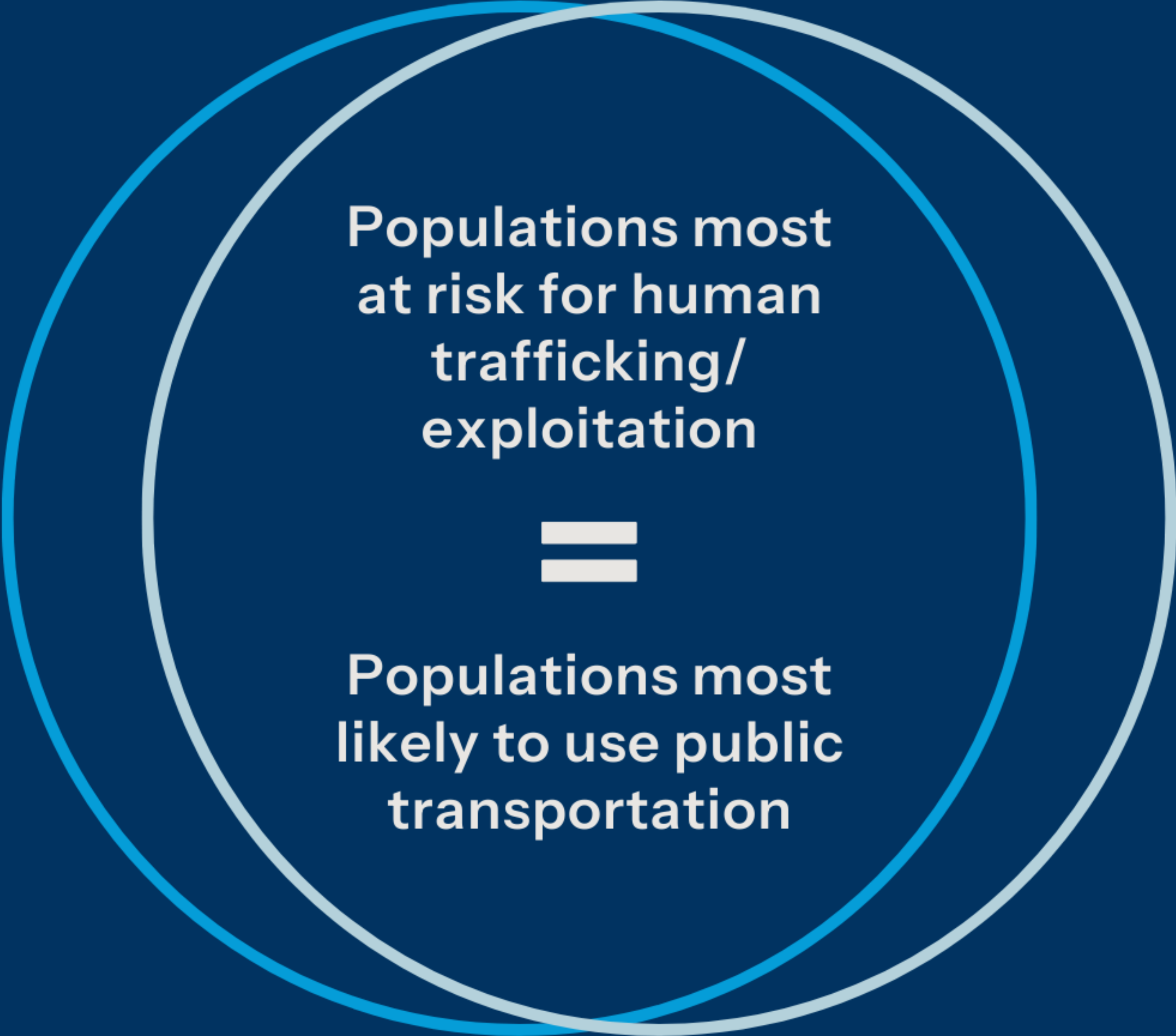
**40%**

of sex  
trafficking  
victims in the  
US identified  
as Black.

**63%**  
of labor  
trafficking  
victims in the US  
identified as  
Hispanic.

**Populations  
most at risk for  
human  
trafficking/  
exploitation**

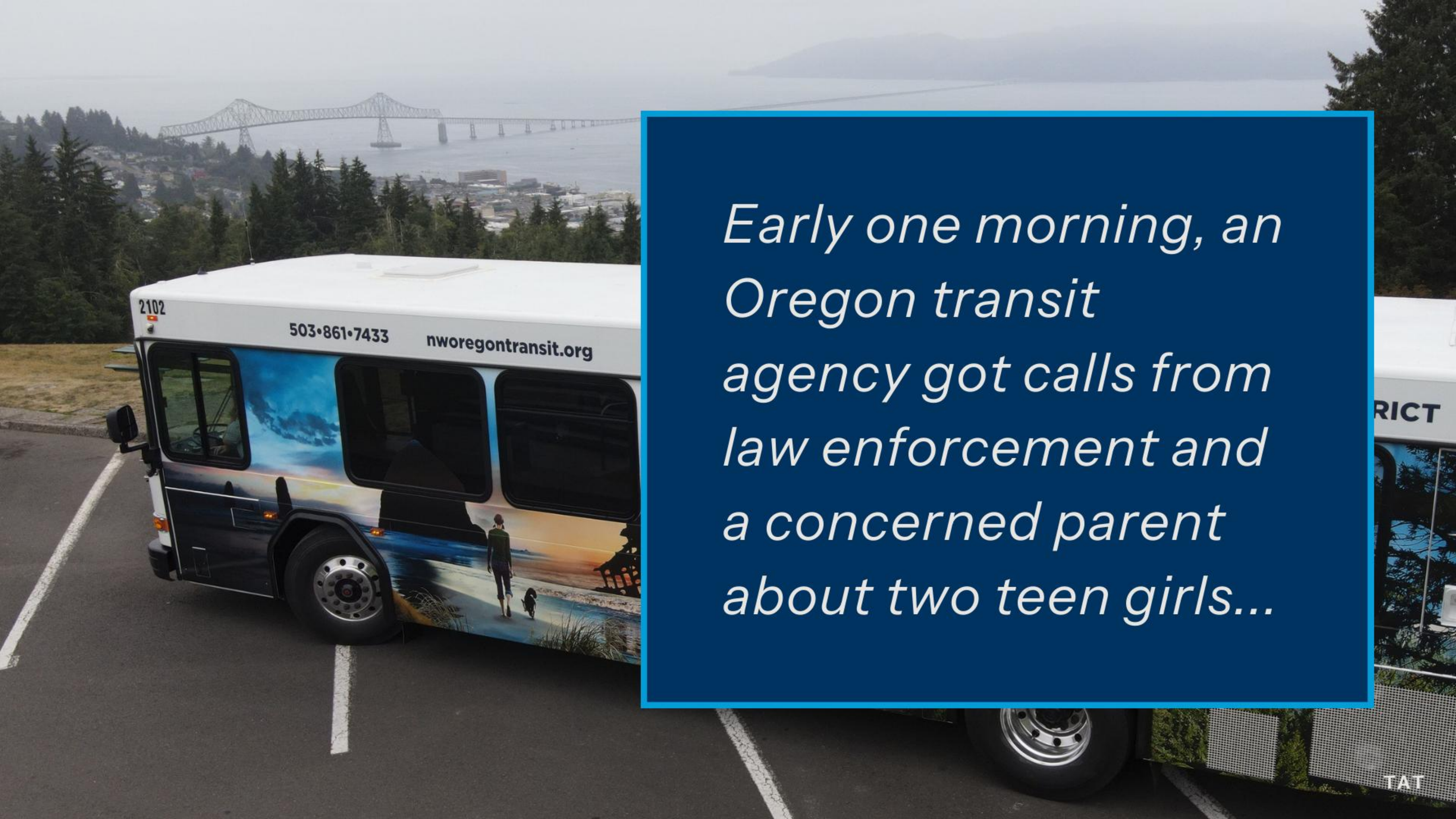
**Populations  
most likely to  
use public  
transportation**



**Populations most  
at risk for human  
trafficking/  
exploitation**

**=**

**Populations most  
likely to use public  
transportation**



*Early one morning, an Oregon transit agency got calls from law enforcement and a concerned parent about two teen girls...*

# OPERATORS CAN NOTICE:

## Signs of recruitment



A passenger who does not know who bought their ticket or the person they are meeting



Minor traveling without adult supervision



Person at bus stop or bus terminal approaching potential targets



Person/car always at terminal but never gets on a bus



Job flyers that are incomplete or too good to be true?

# OPERATORS CAN NOTICE:

## Signs of control



Not allowed to speak for him/herself



Not in possession of own ticket, wallet, ID, documentation



Branding or tattooing that marks 'ownership' (often of trafficker's name)



Don't know where they are, confused about whereabouts



Need a ticket but have no money

# OPERATORS CAN NOTICE:

## Signs of force/fear



Bruising, injuries,  
signs of physical  
abuse



Agitated,  
scared/crying



Disheveled and/or  
malnourished



Trying to get away  
from someone

# OPERATORS CAN NOTICE:

## Signs of commercial sex/labor exploitation



Offers to exchange sex for a ride, meal, etc. or any mention of a pimp/quota.



Mentions having a pimp, making a quota, prostitution



Working excessively long hours and/or in dangerous conditions



Employer is withholding pay





# TRAINING FOR...



# ANTI-TRAFFICKING RESOURCES



## NOT SURE WHAT YOU'RE WALKING INTO?

Thousands of girls, boys, women and men are forced into prostitution each year. Sex traffickers lure them into the life with promises of work opportunities and romance. You are not alone. You have other options.



Call the National Human Trafficking Hotline at 1-888-3737-888 (US) or 1-833-900-1010 (Canada). Confidential | TAT

If you or someone you know is being forced to engage in commercial sex and cannot leave, whether it is commercial sex, house work, construction, factory, retail or restaurant work, activity, call the National Human Trafficking Hotline for help and services.

## WHAT TRANSIT NEEDS TO KNOW ABOUT LABOR TRAFFICKING

This document, focusing on labor trafficking, is intended to be a supplementary resource to TAT's human trafficking training materials for transit. Learn more here: [www.tatnonprofit.org/transit](http://www.tatnonprofit.org/transit).

### What is Labor Trafficking?

Human trafficking – or modern-day slavery – is the exploitation of human beings through force, fraud or coercion for the purposes of commercial sex or forced labor. Labor trafficking is often characterized by factors such as:

- Extremely long hours with few or no breaks;
- Confiscation of identification documents (e.g. passports, driver's license, etc.);
- Receiving little or no pay, unreasonable sales quotas, wage theft;
- Excessive or unexpected fees/deductions taken from paychecks;
- Isolation of workers (e.g. withholding information, limiting contact with outsiders, etc.);
- Unsafe or hazardous work conditions;
- Housing at the worksite that appears sub-standard and closely monitored; and/or
- Verbal, physical or sexual abuse (or threats of abuse).

### Victims of Labor Trafficking

Victims are often lured into labor trafficking through false promises about employment and opportunity. Immigrants are highly vulnerable to all forms of human trafficking, though the crime does not require the crossing of an international border. Victims can be of any nationality, gender or age, though certain types of trafficking may entrap higher rates of men, women or children because of the type of labor involved. For example, men are trafficked in construction and agriculture at higher rates; women are trafficked more commonly in domestic work and hospitality, and children are exploited at higher rates in begging activities and forced peddling.

### Buses and Labor Trafficking: Intersections

Victims may be coming into contact with transit during their journey or exit phases.

Transit operators should be looking for vulnerable individuals who may be in a trafficking situation. Transit could also be used by traffickers to move victims to a new location.

Transit operators should be aware that victims may ride buses for work. For example, a victim may be in a trafficking situation if they have been contacted by a person who offers them a job in operations and escorting or through third parties, landscaping, etc.

Transit centers are a safe place for victims to seek help from friends or family members.

## DISPATCHERS MATTER IN THE FIGHT AGAINST HUMAN TRAFFICKING.

While your drivers may be on the front lines of seeing potential victims, your actions can secure a safe exit for victims in need.

## BUS DRIVERS: BE ON THE LOOKOUT FOR HUMAN TRAFFICKING!

### LOOK FOR:

- Passengers who are not allowed to speak for themselves
- Distressed appearance, agitated, scared/crying
- Minors traveling without adult supervision
- Offers to exchange sex for a ride, meal, etc.
- Does not know the person who is picking them up
- Any acknowledgement of having a pimp or needing to make a quota
- Signs of branding or tattooing (often of trafficker's name)
- Passengers not in possession of own ticket, money or ID

### TAKE ACTION:

- Watch TAT's training video for motorcoach and transit
- Spread the word with your colleagues and at home
- Display TAT's awareness materials on buses or in transit centers
- Whenever you suspect human trafficking... **make the call, save lives!**
  - Follow your internal reporting protocol
  - For victim services, call the National Human Trafficking Hotline: 1-888-3737-888 (US) | 1-833-900-1010 (CAN)

Download the TAT app:



INTERNAL REPORTING Report suspected trafficking to:

What is your company's policy on handling potential human trafficking?

**MAKE THE CALL, SAVE LIVES.**

1-888-3737-888 (US)  
1-833-900-1010 (CAN)



**Warning:** Please do not approach traffickers. Allow law enforcement to deal with traffickers and recover victims. Approaching traffickers is not only dangerous for you and their victims but could lead to problems in the eventual prosecution of traffickers.

**When calling law enforcement:** In order to open an investigation on your part, they need "actionable information." This would include:

- Descriptions of cars or trucks (make, model, color, license plate, truck and/or USDOT number, etc.) and people (height, weight, hair color, eye color, age, etc.) Take a picture if you can.
- Specific times and dates | When did you see the event in question take place? (What day was it?)
- Add names and locations where suspicious activity took place.
- When you contact law enforcement, **tell them you suspect human trafficking, not prostitution.**

**Note:** Human trafficking is a crime under federal law in both the U.S. and Canada. In the U.S., there is a lifetime ban on a CDL for any individual who uses their CMV to commit a felony involving human trafficking. Some states punish sex purchasers the same as sex traffickers, and most states have a buyer-applicable trafficking law that prohibits a mistake-of-age defense in prosecutions for buying a commercial sex act with any minor.

www.tatnonprofit.org

## TRANSIT ON THE LOOKOUT TO COMBAT HUMAN TRAFFICKING

A TOOLKIT FOR PUBLIC TRANSIT AGENCIES IN THE UNITED STATES & CANADA



CREATED BY BUSING ON THE LOOKOUT  
A PROGRAM OF TRUCKERS AGAINST TRAFFICKING

# VICTIM-CENTERED POSTERS

## NOT SURE WHAT YOU'RE WALKING INTO?

Thousands of girls, boys, women and men are forced into prostitution each year. Sex traffickers lure them into the life with promises of work opportunities and romance. You are not alone. You have other options.



Call the National Human Trafficking Hotline:  
1-888-3737-888 or send a text to BeFree (233733)  
Confidential | Toll Free | 24/7

If you or someone you know is being forced to engage in any activity and cannot leave, whether it is commercial sex, housework, farm work, construction, factory, retail or restaurant work, or any other activity, call the National Human Trafficking Hotline at 888-3737-888 to access help and services.



latnonprofit.org

## ¿QUIERES DEJAR ESA VIDA?

Sarah tenía quince años cuando se fue de su casa. Chris parecía ser la única persona a quien ella le importaba. Cuando Chris le dijo que la dejaría si ella no se prostituía, Sarah creyó que no tenía otra opción. NO ESTÁS SOLA. TIENES OTRAS OPCIONES.



Llama a La Línea Directa Contra la Trata de Personas  
1-888-3737-888 o envía un mensaje de texto al 233733  
Confidencial | Gratuita | 24/7

Si tú o una persona que conoces está siendo forzada a cualquier actividad y no pueden dejarla, ya sea que se trate de sexo por dinero, trabajo en casa, en agricultura, construcción, fábrica, tienda departamental o restaurante o en cualquier otra actividad, llama a la Línea Nacional al 888-3737-888 para recibir ayuda y servicios.



latnonprofit.org

## DO YOU REALLY TRUST THIS PERSON?

Every year, traffickers lure thousands of victims into exploitation with false promises of work or romance. If it sounds too good to be true, it usually is. You are not alone. You have other options.



Call the National Human Trafficking Hotline:  
1-888-3737-888 or send a text to BeFree (233733)  
Confidential | Toll Free | 24/7

If you or someone you know is being forced to engage in any activity and cannot leave, whether it is commercial sex, housework, farm work, construction, factory, retail or restaurant work, or any other activity, call the National Human Trafficking Hotline at 888-3737-888 to access help and services.



latnonprofit.org

## EL AMOR NO LASTIMA. LOS ENGANOS Y LOS PADROTES SÍ.

Keisha vivía en las calles. Scott le prometió amor y un lugar al cual llamar su hogar. Un día Scott le dijo que tenía que vender su cuerpo si quería seguir así. Si alguien te está pidiendo que vendas tu cuerpo o te pongas en peligro, eso no es amor. Haga la llamada.



Llama a La Línea Directa Contra la Trata de Personas  
1-888-3737-888 o envía un mensaje de texto al 233733  
Confidencial | Gratuita | 24/7

Si tú o una persona que conoces está siendo forzada a cualquier actividad y no pueden dejarla, ya sea que se trate de sexo por dinero, trabajo en casa, en agricultura, construcción, fábrica, tienda departamental o restaurante o en cualquier otra actividad, llama a la Línea Nacional al 888-3737-888 para recibir ayuda y servicios.



latnonprofit.org

# CAN A SIGN MAKE A DIFFERENCE?

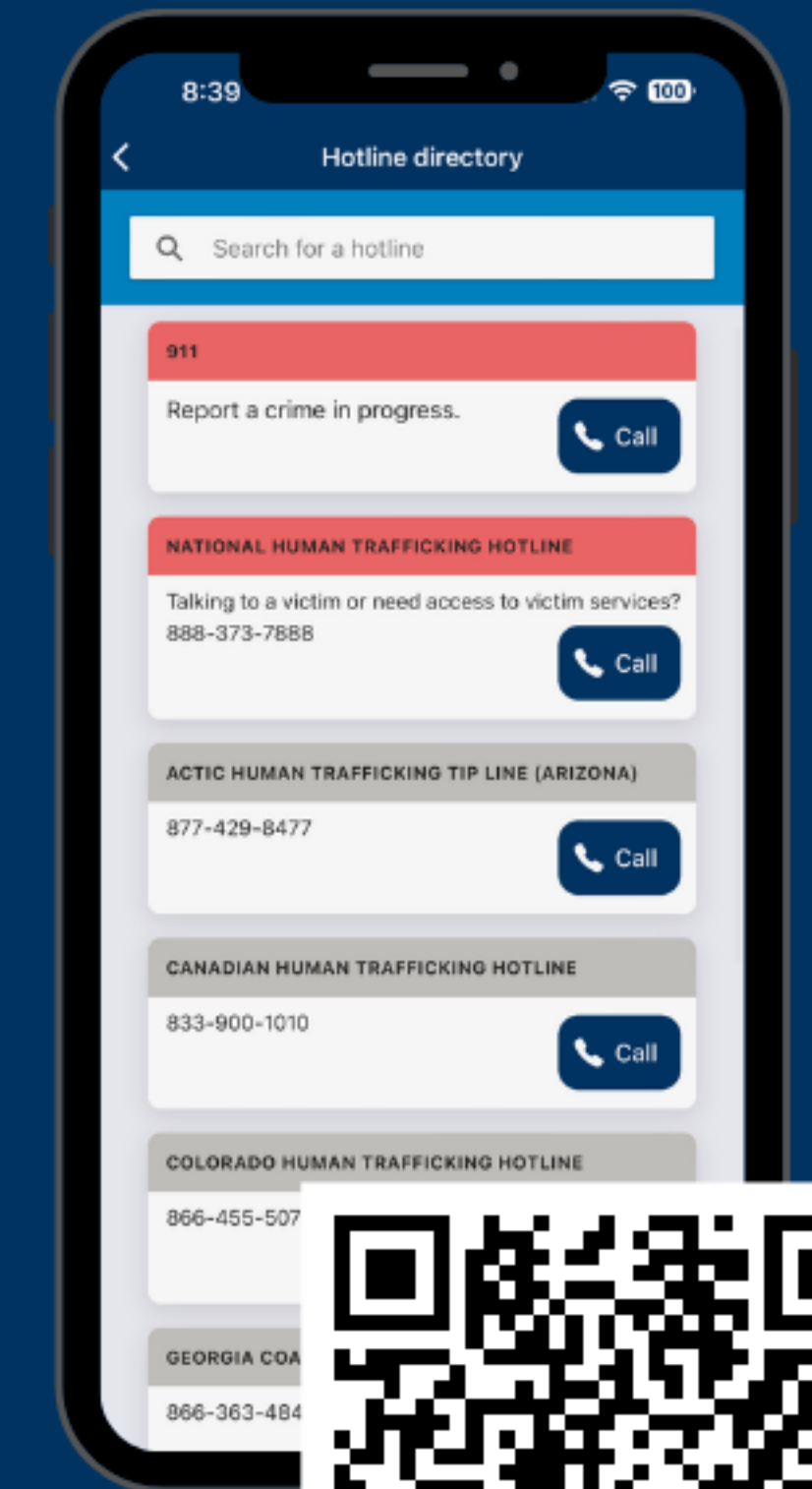
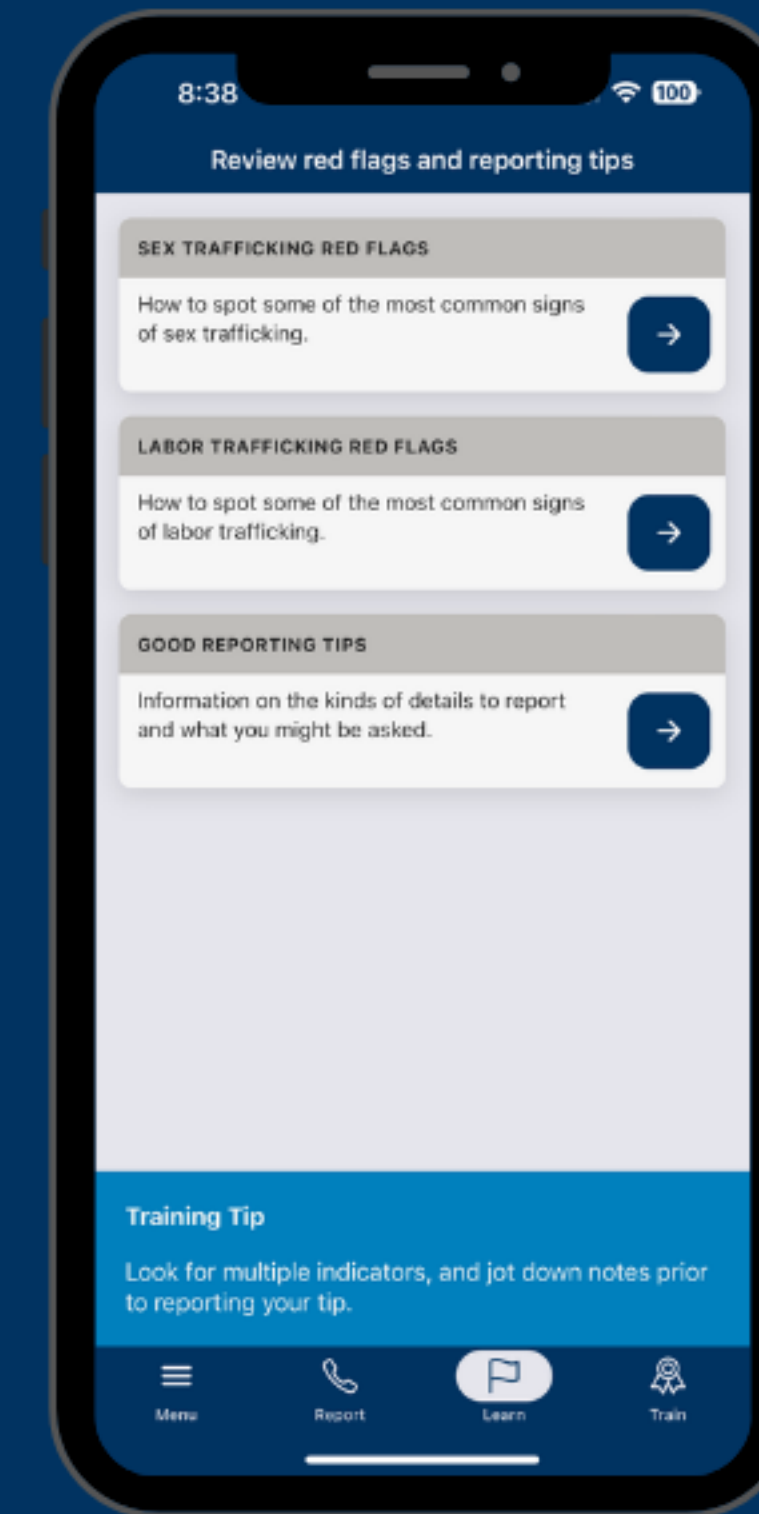
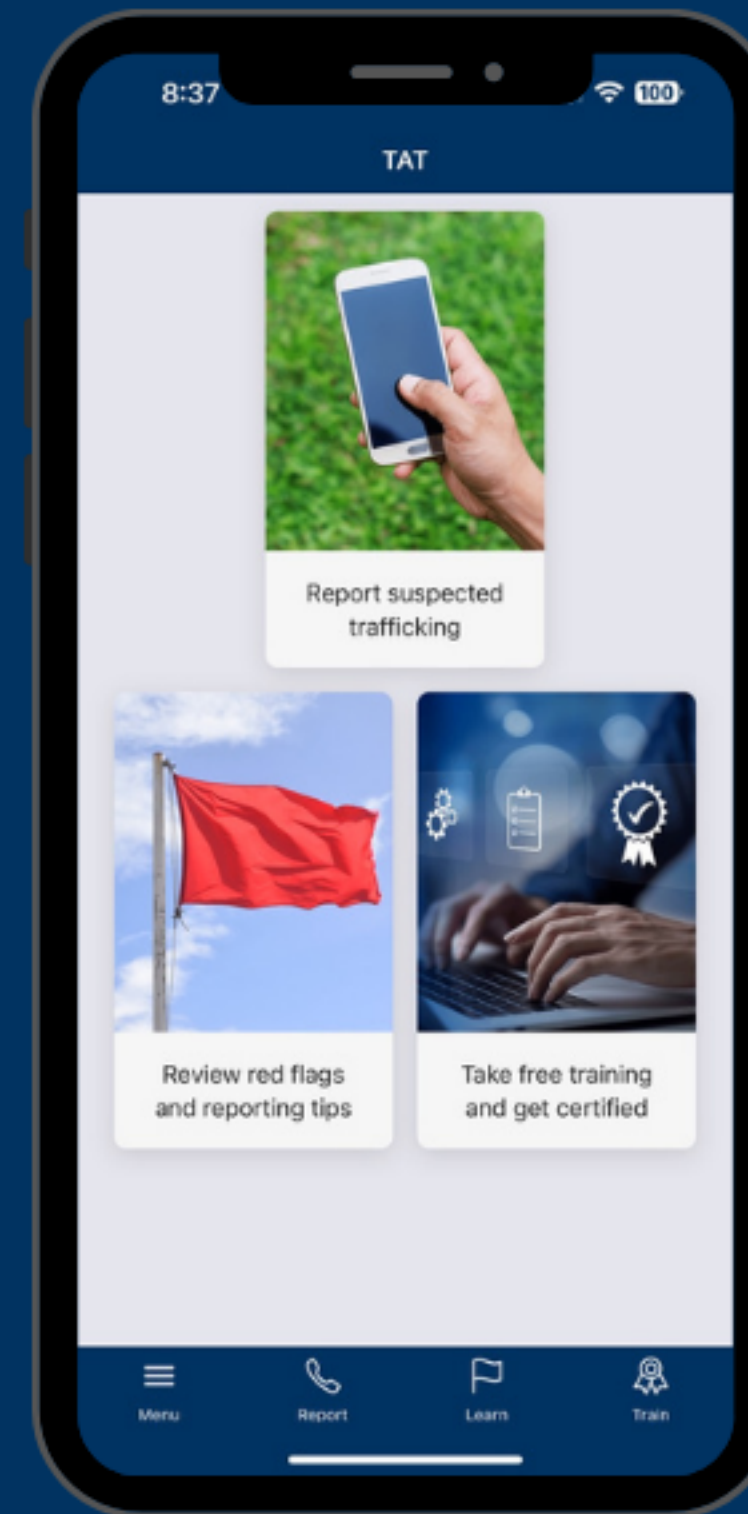


**“If you have a poster up on a bus or metro station, there’s no way somebody can take that down. It’s out there; if someone reads it, they can’t unsee it.”**

***Suleman Masood, J.D.***

# UPDATED TAT APP

- Tailored red flag content
- Enhanced reporting capabilities
- Gather data about reports made




# NEW MOTORCOACH TOOLKIT


- How to implement TAT training
- Response protocols
- Additional action items
- Impact stories & FAQs

How the Motorcoach Industry  
Can Combat Human  
Trafficking


A TOOLKIT FOR  
IMPLEMENTING  
ANTI-TRAFFICKING  
INITIATIVES



[www.tatnonprofi](http://www.tatnonprofi)



**MOTORCOACH**



# YOUTH ON TRANSPORTATION

[www.tatnonprofit.org/youth](http://www.tatnonprofit.org/youth)  
[www.tatnonprofit.org/parents](http://www.tatnonprofit.org/parents)

- Youth targeted awareness materials
- Posters, postcards, stickers, social media assets
- Options for co-branding





# RESPONSE PROTOCOL TEMPLATE

In order for human trafficking training to be truly effective, trainees must know exactly how to report suspicions of trafficking, and agencies must be prepared to respond to those reports.



# CASE STUDY: OKLAHOMA



# RED FLAGS

- Not in possession of their own ticket, wallet, ID or documentation
- Don't know where they are
- Need a ticket or a way home but have no money
- Bruising, injuries, signs of physical abuse
- Looks disheveled
- Looks malnourished
- Concerning/unsafe working conditions
- Employer is withholding pay or they are working without pay

# TIPS

- Listen, believe what you're told
- Support them in the ways you can (offer a cup of coffee/water, place to sit)
- Refer to services, help make a phone call for shelter or support

# CASE STUDY: WASHINGTON

A photograph of a waiting area with a long row of blue upholstered chairs with perforated metal backs and armrests. The chairs are arranged in a line, receding into the distance. In the background, there are people walking and a large window or glass wall. The lighting is bright and even.

# RED FLAGS

- Bruising/injuries
- Agitated/scared/crying
- Confused about whereabouts
- No ID, phone, money
- Trying to get away from someone
- Looking for a ticket but no money

# TIPS

- Listen, believe what you're told
- Support them in the ways you can (offer water, quiet place, help them make a phone call)
- Refer to services, help make a phone call
- Respect their wishes

# CASE STUDY: TEXAS



# WHAT CAN YOU DO?



Implement training for new and existing staff



Establish an internal reporting policy



Display TAT's victim-centered posters



Host a virtual information session with TAT



Introduce us to other transportation stakeholders

The thoughtful actions of three EMBARK transit employees in Oklahoma City, OK connected a likely victim of human trafficking to local services, where she was able to access food, shelter and support for next steps.



# TAT'S 2022 HARRIET TUBMAN AWARD





BRIDGESTONE



C.H. ROBINSON



TravelCenters of America

amazon



FedEx



Rental | Leasing | Logistics



Quality Carriers



PROGRESSIVE COMMERCIAL

Pilot COMPANY

Marathon Oil

ConocoPhillips



BLUETRITON

ArcBest

TC Energy



大成 DENTONS

ENBRIDGE Life Takes Energy

FirstFleet

PFG Performance Food Group



KeHE

TQL TOTAL QUALITY LOGISTICS



MILESTONE XPO



Ryder Ever better.



PROVIDING ENERGY. IMPROVING LIVES.

RIHM FAMILY COMPANIES

WERNER WE KEEP AMERICA MOVING

THREE SIXTEEN KEGLER FUND

SCHNEIDER

FLEET Advantage ASSET MANAGEMENT REIMAGINED



EVE INTERNATIONAL LOGISTICS



SM ENERGY

GREAT DANE

THREE SIXTEEN KEGLER FUND

TRUCKSTOP



Walmart Transportation

Bison



HIGHWAY TRANSPORT Safety Focused. Quality Driven.

VOLVO

KNIGHT TRANSPORTATION

NAPA RIVER INSURANCE SERVICES

WOMEN IN TRUCKING From the Driver Seat to the C-Suite

U.S. XPRESS



Quantix

TIA TRANSPORTATION INTERMEDIARIES ASSOCIATION CENTER OF THE SUPPLY CHAIN

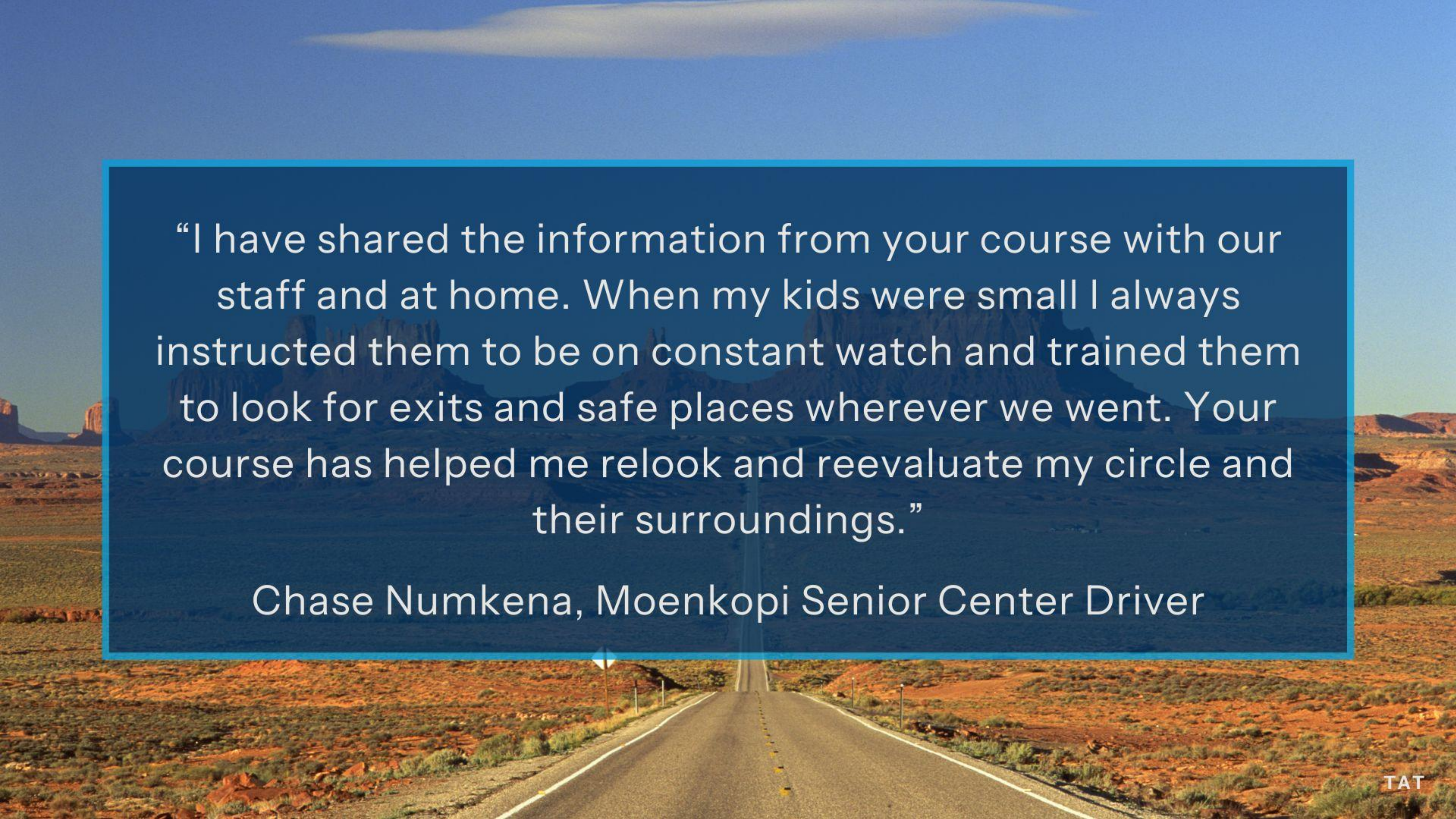


# SUNSET EMPIRE TRANSPORTATION DISTRICT ASTORIA, OR



*“It is crucial for transit to be a part of the efforts to combat human trafficking. Our agencies interact with millions of people on a daily basis, and having trained staff will give them the tools they need to keep an eye out for potential victims. This is personal to me, I’ve seen the effects of it in our area.”*

- Jeff Hazen, Executive Director



“I have shared the information from your course with our staff and at home. When my kids were small I always instructed them to be on constant watch and trained them to look for exits and safe places wherever we went. Your course has helped me relook and reevaluate my circle and their surroundings.”

Chase Numkena, Moenkopi Senior Center Driver



# LOUIE GREEK

Training Specialist

720-289-5022

lgreek@tatnonprofit.org

[www.tatnonprofit.org/transit](http://www.tatnonprofit.org/transit)



@tatnonprofit



**2, 3 1 6, 4 6 6**

**REGISTERED AS  
TAT-TRAINED**



**SCAN ME**