

YUROK TRIBE FULL DEPTH RECLAMATION & PAVING OPERATIONS

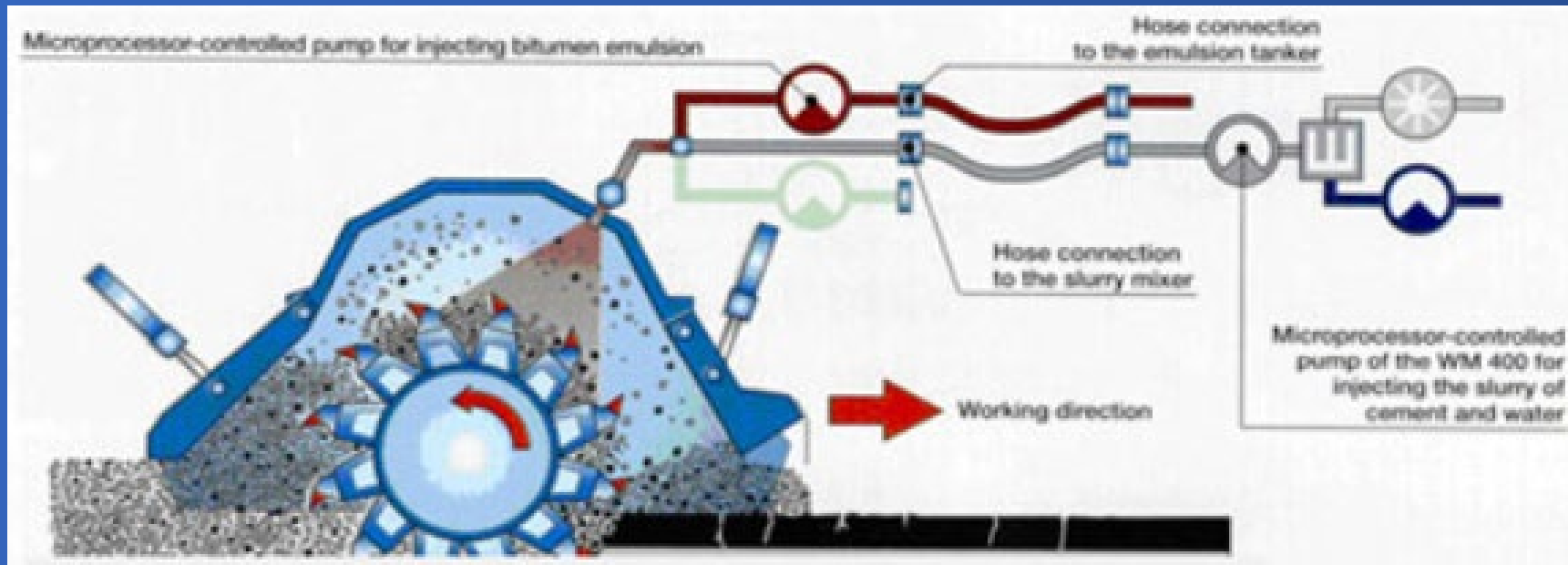


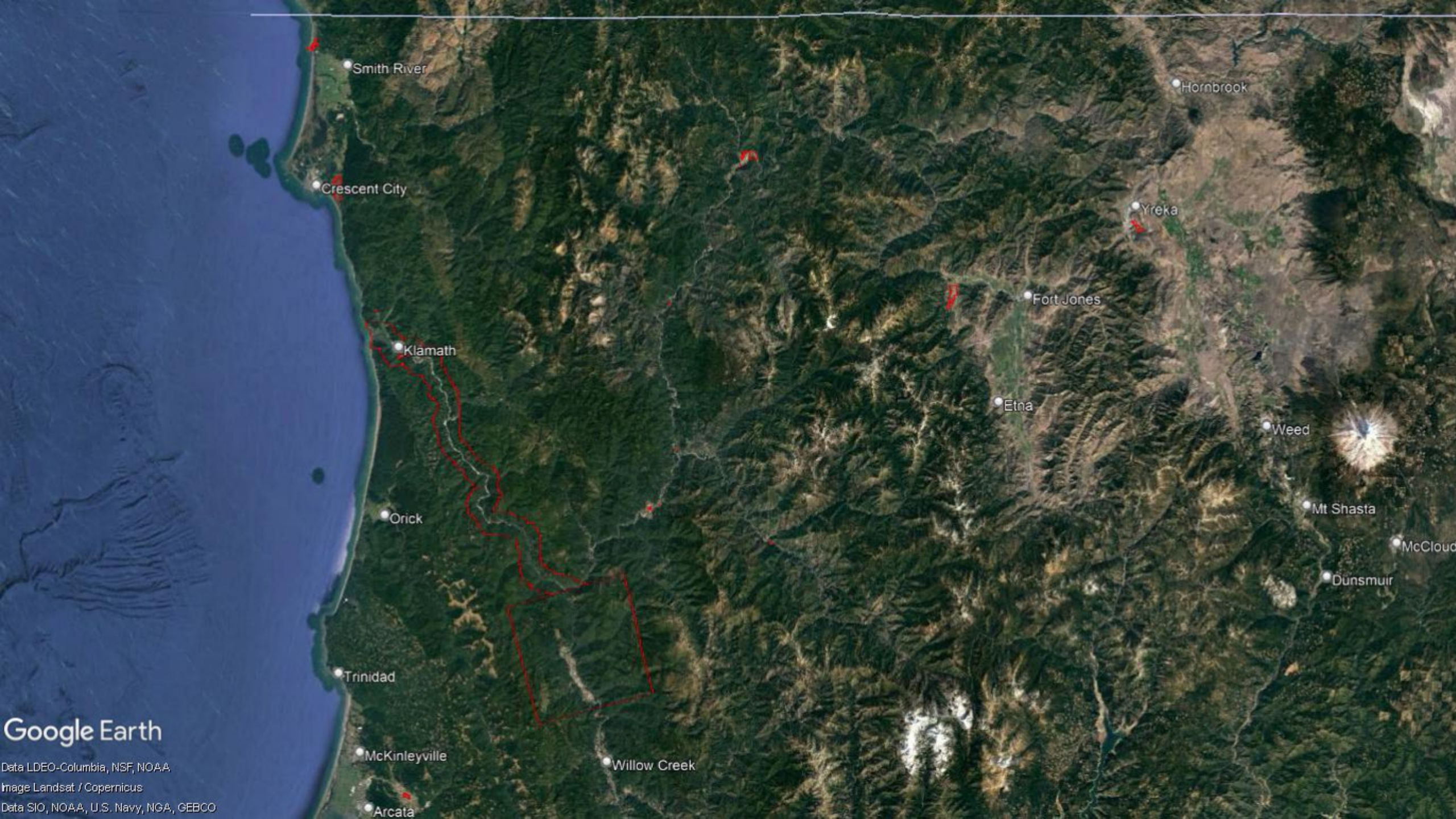
**Bureau of Indian Affairs
Pacific Regional Office**

**Alfred Reed Jr., M.S.
Supervisory Civil Engineer
(Highway)**

Full Depth Reclamation With Cement

Full-Depth Reclamation (FDR) with cement is a type of Soil-Cement and pavement rehabilitation method that involves recycling an existing deteriorate asphalt surface and its underlying base, subbase, and/or subgrade materials into a new stabilized base layer.





Google Earth

Data LDEO-Columbia, NSF, NOAA
Image Landsat / Copernicus
Data SIO, NOAA, U.S. Navy, NGA, GEBCO



Berry Glenn

Orick

Surgone

Mettāh

Martins Ferry

Weitchpec

Full Depth Reclamation Project Parameters

Tulley Creek Road

Length = 2.2 miles

Width = 10 feet

Depth = 9 inches

Cement = 3.93%



Full Depth Reclamation Project Parameters

New Village Road
Length = 0.3 miles
Width = 12 feet
Depth = 9 inches
Cement = 3.93%



Full Depth Reclamation Project Parameters

Jack Norton Road
Length = 0.3 miles
Width = 12 feet
Depth = 9 inches
Cement = 3.93%



Full Depth Reclamation Project Parameters

McKinnon Hill Road

Length = 0.6 miles

Width = 10 feet

Depth = 9 inches

Cement = 3.93%



Full Depth Reclamation Project Parameters

Morkwon Road
Length = 0.1 miles
Width = 10 feet
Depth = 9 inches
Cement = 3.93%



FDR Project Schedule at Yurok Tribe

SUNDAY	MONDAY	TUESDAY	WEDNESDAY	THURSDAY	FRIDAY	SATURDAY
31	1 Pauma Mob	2 Pre-Con Mtg	3 FDR -TCR	4 FDR -TCR	5 FDR -TCR	6 FDR –TCR Mob NVR
7	8 FDR - NVR	9 Mob - JNR Mob – PR	10 FDR - JNR Pave - TCR	11 Mob - MR Pave - TCR	12 FDR – MR/Mc Pave - TCR	13 Mob – TC Fac Pave - NVR
14 Pauma DeMob	15 Pave - JNR	16 Pave – Mk/Mc	17 Pave– PR DeM	18	19	20

Full Depth Reclamation As-Built

Tulley Creek Road

Length = 2.2 miles

Width = 10 feet

Depth = 9 inches

Cement = 3.93%

Length = 1.8 miles

Width = 16 feet

Depth = 9 inches

Cement = 4.2%



Full Depth Reclamation As-Built

New Village Road
Length = 0.3 miles
Width = 12 feet
Depth = 9 inches
Cement = 3.93%

Length = 0.3 miles
Width = 10 feet
Depth = 9 inches
Cement = 4.5%



Full Depth Reclamation As-Built

Jack Norton Road
Length = 0.3 miles
Width = 12 feet
Depth = 9 inches
Cement = 3.93%

Length = 0.3 miles
Width = 10 feet
Depth = 9 inches
Cement = 4.5%



Full Depth Reclamation As-Built

McKinnon Hill Road

Length = 0.6 miles

Width = 10 feet

Depth = 9 inches

Cement = 3.93%

Length = 0.5 miles

Width = 12 feet

Depth = 9 inches

Cement = 4.6%



Full Depth Reclamation As-Built

Morkwon Road
Length = 0.1 miles
Width = 10 feet
Depth = 9 inches
Cement = 3.93%



FDR Project Schedule at Yurok Tribe

SUNDAY	MONDAY	TUESDAY	WEDNESDAY	THURSDAY	FRIDAY	SATURDAY
31	Pauma Mob 1	Pre-Con Mtg 2	FDR -TCR 3	FDR -TCR 4	FDR -TCR 5	FDR -TCR 6 Mob NVR
← Pauma Mob/PR Mob Eq →		Pre-Con All	FDR -TCR	FDR -TCR	FDR -TCR Mob - NVR	FDR - NVR FDR - TCR
7	FDR - NVR 8	Mob - JNR 9	FDR - JNR 10	Mob - MR 11	F - MR/Mc 12	M-TC Fac 13
		Mob - PR	Pave - TCR	Pave - TCR	Pave - TCR	Pave - NVR
	FDR - ShD	FDR -ShD	F-NVRa/NJR	FDR - JNR	FDR - Mc	Pauma DeMob
			PR - Mob	Pave - TCR	Pave - TCR	Pave - TCR
14	15	16	17	18	19	20
Pauma DeMob	Pave - JNR	Pave - Mk/Mc	Pave- PR DeM			
	Pave-TC/NVR/ JNR	Pave-McR/ Mob NVR	Pave-NVR ap / PR DeMob			